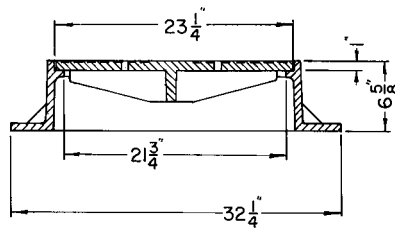


■ Note: When specifying/ordering grates, refer to "Choosing the Proper Inlet Grate" on pages 125-126.
For a complete listing of FREE OPEN AREAS and WEIR PERIMETERS of all NEENAH grates, refer to pages 327-332.

R-1789-B
Manhole Frame, Vented Lid

Heavy Duty



Supplied By:

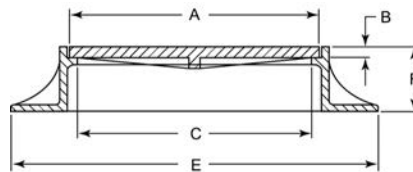


877-903-7246

www.trenchdrainsupply.com

R-1791 Series
Small Manhole Frame, Solid Lid

Light Duty



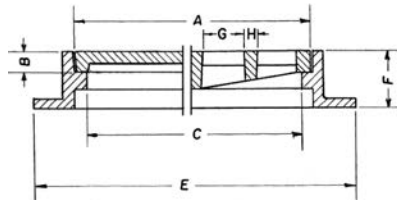
Illustrating R-1791-F

Dimensions in inches

Catalog No.	A	B	C	E	F	Grate Alt.
R-1791-A	12	1	11	19	4	R-2525-A
R-1791-B	15 1/4	3/8	14 1/2	20 1/2	4 1/4	-
R-1791-C	15 5/8	1 3/8	14 3/4	21	4 3/4	R-2525-C
R-1791-E	18	1	17	25	4 1/2	R-2525-E
R-1791-F	20 1/2	5/8	18	30	5	R-2525-F
R-1791-G	19 1/2	1 1/2	18	29	5 1/2	R-2525-G

R-1792 Series
Manhole Frame, Grate or Lid

Heavy Duty



These units are reversible. See R-5900-1 Series for top flange.
For bolted units, see R-6461-2 Series.

Dimensions in inches

Catalog No. Solid Lid	Catalog No. Open Grate	A	B	C	E	F	G	H
R-1792-AL	R-1792-AG	10 1/4	1 1/2	8 1/2	14 1/2	4	1 x 3 3/4	7/8
R-1792-BL	R-1792-BG	13 1/4	1 1/2	11 1/2	17 1/2	4	1 x 5	1
R-1792-CL	R-1792-CG	16 1/4	1 1/2	14 1/2	20 1/2	4	1 x 6 3/4	7/8
R-1792-DL	R-1792-DG	18 1/4	1 1/2	16 1/2	22 1/2	4	1 1/8 x 7 1/8	1
R-1792-EL	R-1792-EG	22 1/4	1 1/2	20 1/2	26 1/2	4	1 1/8 x 4	1
R-1792-FL	R-1792-FG	25 1/4	1 1/2	23 1/2	29 1/2	4	1 1/8 x 4	3/4
R-1792-GL	R-1792-GG	28 1/4	1 1/2	26 3/8	32 1/2	4	1 x 5	7/8
R-1792-HL *	R-1792-HG	34 1/4	1 1/2	32 1/2	38 1/2	4	1 x 7	1
R-1792-JL	R-1792-JG	40	1 1/2	38 1/2	44 1/2	4	1 1/8 x 8 3/4	1
R-1792-KL	R-1792-KG	46 1/8	1 1/2	44 1/2	50 1/2	4	1 1/16 x 5 1/2	1

* Available with removable center lid, see R-1586.